

Installation Instructions

- VarioPipe optical fibre building cable & pipe entry system;
- VarioPipe optical fibre building cable & pipe entry system with adapter for cartridge gun;

For wall thicknesses from 200 mm;

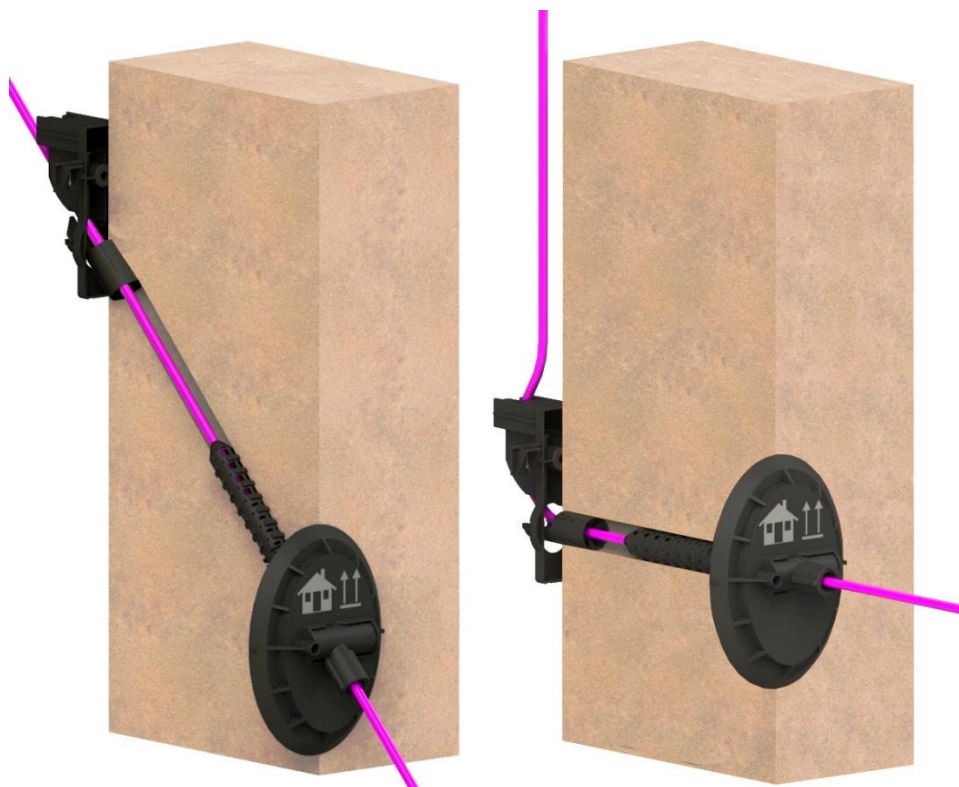
For Core drill hole \varnothing 25 mm;

For media cables: 1x copper or optical fibre cable \varnothing 6-13 mm

1x SpeedNet pipe \varnothing 7-12 mm

1x oval cable 4/8 mm

2x micropipes \varnothing 7 mm



1	General information	3
2	Safety information	3
3	Product description	4
3.1	Installation options	4
3.2	Dimensions	4
4	Package includes	5
5	Required tools	5
6	Installation	6
6.1	Drill hole	6
6.2	Preparing the wall duct	7
6.3	Preparing the media cable	9
6.4	Inserting the wall duct	10
6.5	Inserting the media cable	12
6.6	Injecting the sealing foam	13
6.7	Continuing the media cable	14
6.8	Cover (optional)	15
7	Accessories	15
8	Material defects	16
9	Quality management	16
10	Disclaimer/Warranty	16
11	Disposal	16
12	Safety information sheet for L100 sealing foam	16
13	Contact	17

1 General information



Note!

Any person involved in the installation, operation and repair of the product must first read, understand and follow these instructions. We accept no liability for damage and operating malfunctions caused by failure to comply with these instructions.

In the interest of further development, we reserve the right to change individual assemblies and accessories as considered necessary for further safety and performance improvements, while preserving the main features.

The copyright to these instructions remains with Langmatz GmbH.

2 Safety information

The product corresponds to the latest state-of-the-art technology at the time of printing and is delivered in an operationally safe condition.

Unauthorised modifications, particularly to safety-related parts, are prohibited. Langmatz GmbH warns against misuse of the product.

The operator is responsible for installing, operating and maintaining the fixtures.

The operating company is responsible for the following:



- Preventing danger to life and limb of users and third parties.
- Ensuring safe operation.
- Precluding downtime and environmental impact due to incorrect handling.
- Ensuring that protective clothing is worn when working with or on the product.

Do not use the product if it is damaged. Please contact the hotline (see section 13 Contact).



Note!

Applicable occupational safety and environmental protection regulations must be observed during installation, operation, maintenance or repair.



Warning!

Note the following when using L100 sealing foam:

- Wear protective gloves.
- Keep the sealing foam out of reach of children.
- Sealing foam is irritating to eyes, skin and respiratory organs and may cause damage to health. In case of contact, rinse eyes thoroughly and wash skin with soap and water.
- The optimum working temperature is +5°C to +40°C (ideally +10°C to +25°C).
- Storage temperature: +5°C to +40°C (optimum +20°C).

3 Product description

The wall duct is used for the gas- and water-tight sealing of inserted copper or optical fibre cables in buildings and can be used for wall thicknesses of from 200 mm.

Properties:

- Gas- and water-tight to 1 bar | Water impact class to DIN 18533
- W1.1-E / W1.2-E / W2.1-E
- Waterproof concrete stress class 1 to DAfStb 2017
- Waterproof concrete stress class 2 to DAfStb 2017

3.1 Installation options

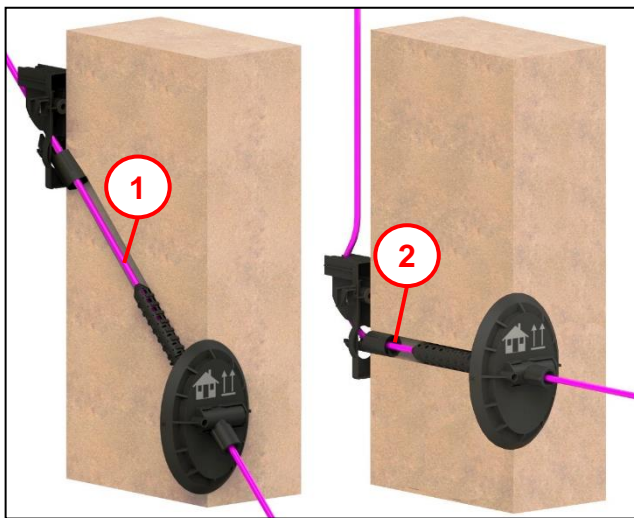


Fig. 1

The system can be installed straight at 90° **(2)** or inclined **(1)** up to 45° upwards. Installation is identical in both cases.

Straight installation is illustrated in these instructions.

3.2 Dimensions

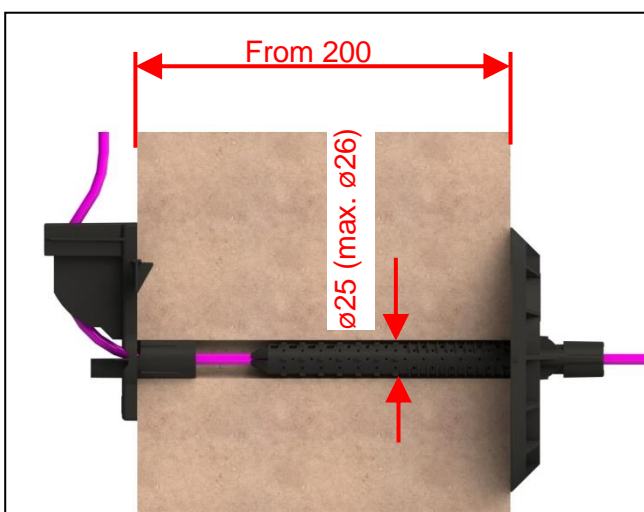


Fig. 2

- For wall thicknesses of from 200 mm
- Core hole ø 25 mm (max. ø 26 mm)

4 Package includes



Fig. 3

Item 1 Guide element

Item 2 Foam pipe

Item 3 Outside flange

Item 4 Dust protection for SpeedNet pipe

Item 5 Universal seal \varnothing 6 – 13 mm

Item 6 Universal seal 2x \varnothing 7 mm

Item 7 Dowel nail 6x40 mm

Item 8 L100 sealing foam cartridge and mixing pipe

Item 9 Work gloves

Item 10 Cover (depending on version)

5 Required tools

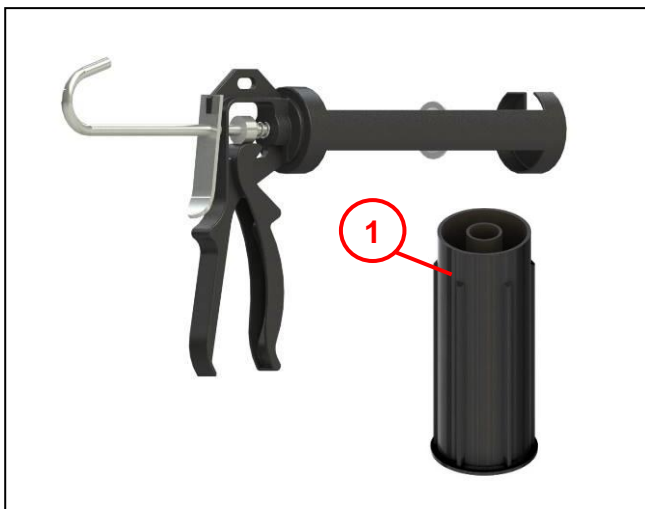


Fig. 4

2-part cartridge gun
(e.g. Ponal PP 6) or standard
caulking gun with adapter **(1)** for 2-
part cartridges.

Not shown:

- Rubber mallet
- Drill \varnothing 25 mm
- Phillips screwdriver
Pozidriv size 2

6 Installation

6.1 Drill hole

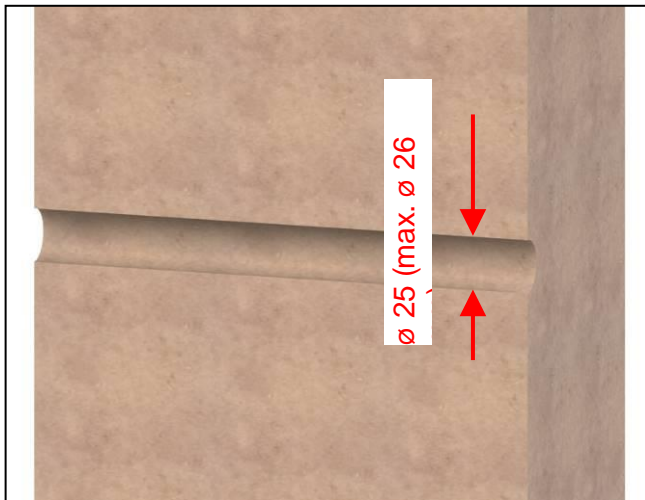


Fig. 5

- The substrate must be clean, largely dry, free of dust and grease, and there should be no standing water.
- Drill a $\varnothing 25$ mm (max. $\varnothing 26$ mm) hole from the inside to the outside.
- At the drill exit point (if present), cut out and remove thermal insulation (polystyrene or rigid foam panels) including any dimpled sheet that may be present.
- **Caution!**
Even out any uneven exterior masonry around the contact surface of the outside flange by sanding or with quick-setting mortar.
Ensure that the entire surface of the outside flange can be in contact.
- Restore plaster chipping or spalling >50 mm as well as damaged bitumen coatings in "tanked walls" that are not covered completely by the outside flange of the wall duct.
Note: The bitumen coating must be touched up according to DIN 18533. Ensure a seamless join to the existing coating.

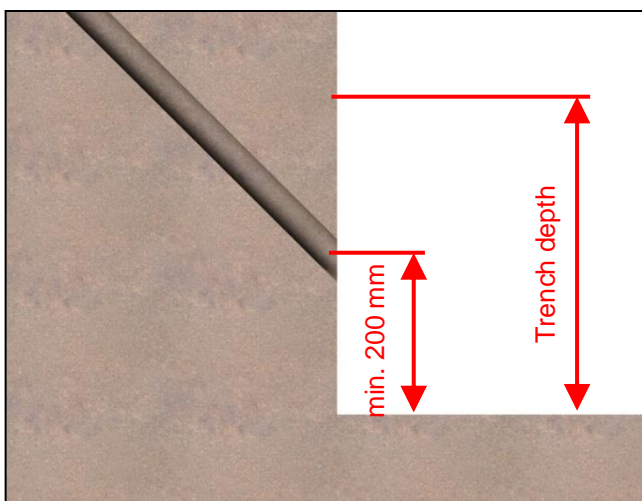


Fig. 6

Note for inclined installation:
Trench depth = wall hole exit + 200 mm.
This clearance is needed for installation.

6.2 Preparing the wall duct



Fig. 7

- Fold the foam pipe **(1)** together.

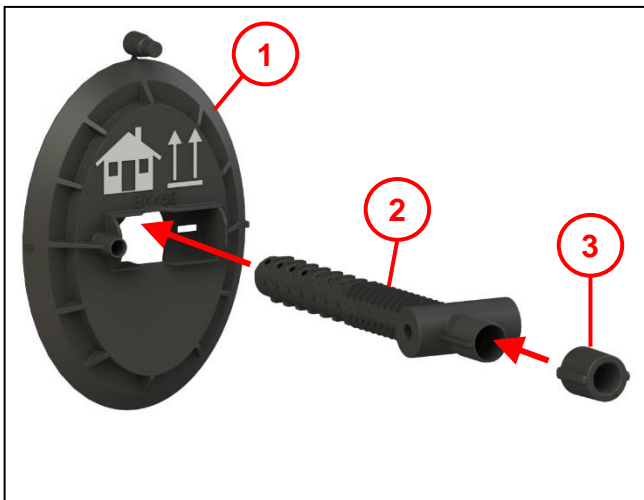


Fig. 8

- Place the universal seal \varnothing 6-13 mm or 2x \varnothing 7mm **(3)** on the foam pipe **(2)**.
- Insert the foam pipe into the outside flange **(1)**.

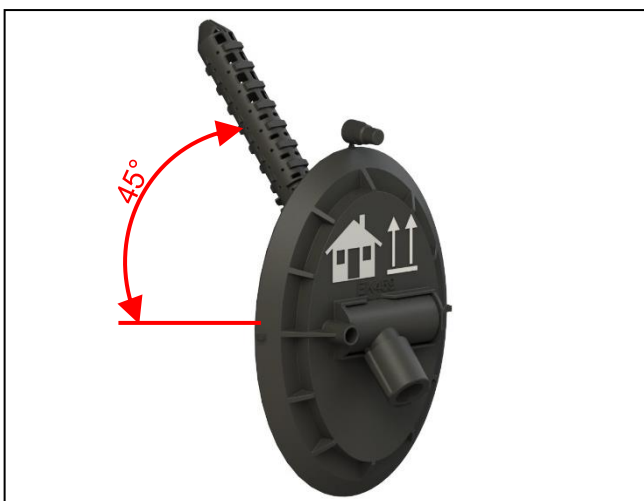


Fig. 9

Inclined installation is possible up to 45° upwards.

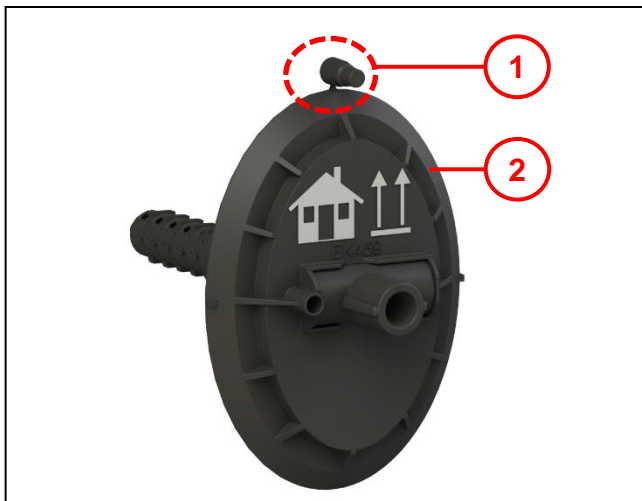


Fig. 10

- Remove the dust protection **(1)** from the outside flange **(2)**.

6.3 Preparing the media cable

Note: Clean the micropipe before use!

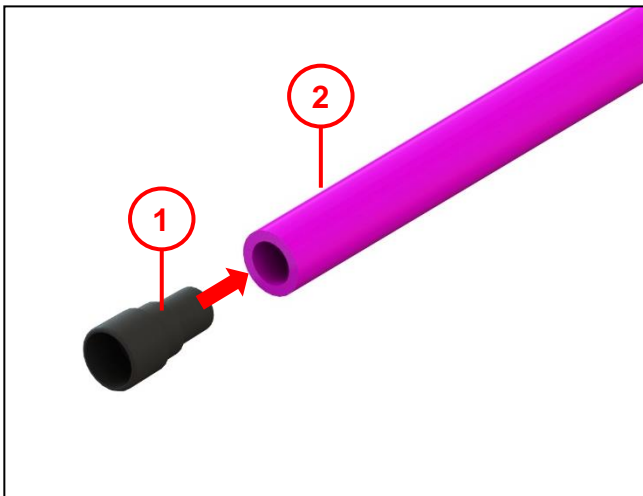


Fig. 11

- Insert the dust protection (1) into the micropipe $\varnothing 12$ (2).

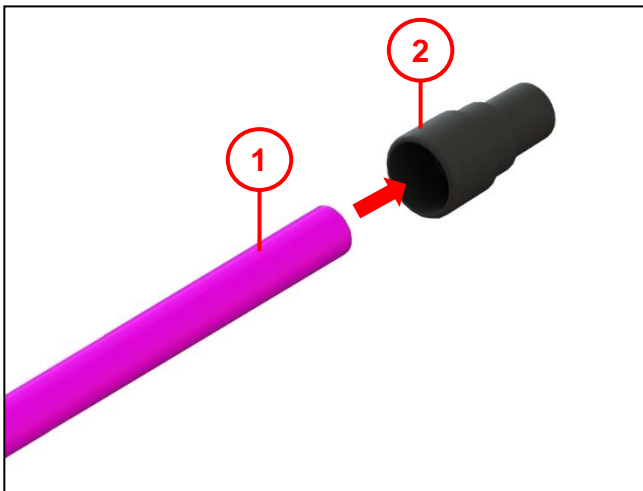


Fig. 12

- Insert the micropipe $\varnothing 7$ or $\varnothing 10$ (1) into the dust protection (2).

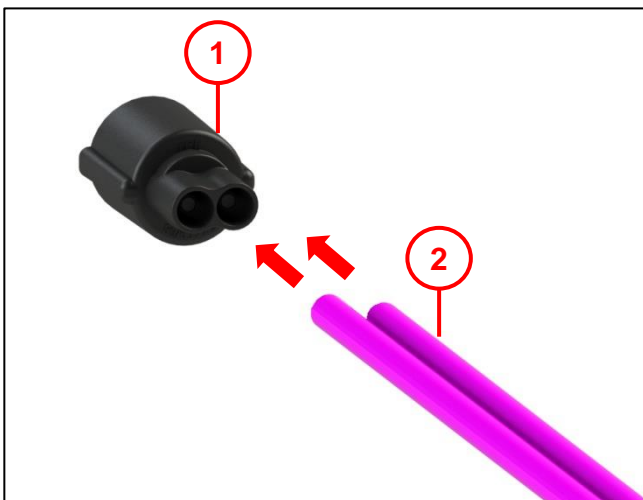


Fig. 13

- When fitted with micropipes $2 \times \varnothing 7$ mm (2), the dust protection is already integrated in the universal seal (1).

Note:

Do not use separate dust protection here!

6.4 Inserting the wall duct

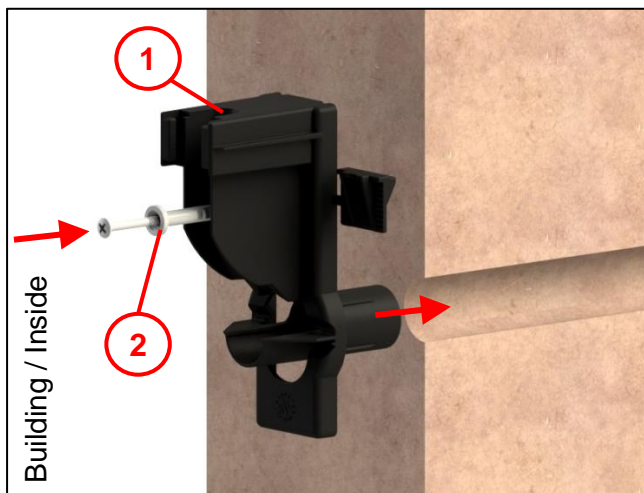


Fig. 14

Note: For installation close above the base plate, continue with Fig. 16.

- Position the guide element **(1)** at the hole and drive in until the base plate is in contact with the wall.
- Drill a hole $\varnothing 6$ at least 50 mm deep.
- Drive the dowel nail 6x40 mm **(2)** into the wall and tighten.

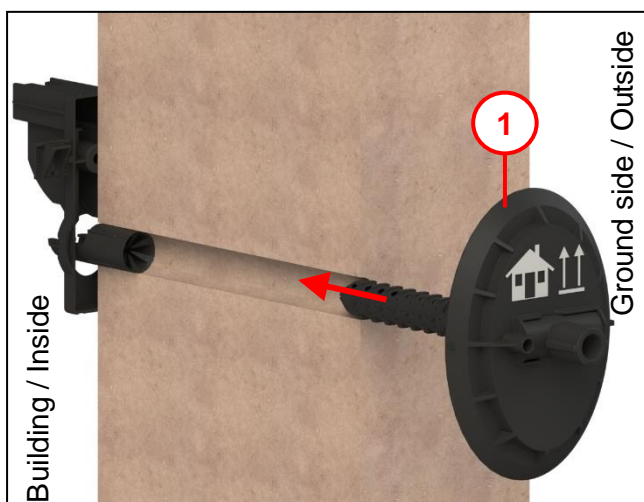


Fig. 15

- Place the foam pipe with outside flange **(1)** in the core hole and insert up to the beginning of the snap lug (note Fig. 18).
- Drive in the foam pipe with outside flange with a rubber mallet until the outside flange is fully in place.

Note:

Alternatively, the guide element **(1)** can also be installed after the outside flange **(2)**, but **note:** the wall duct must be completely installed before foaming!

Continue with Fig. 18

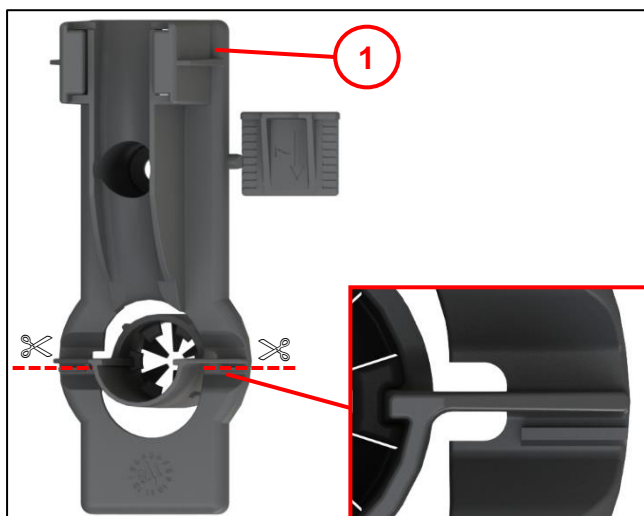


Fig. 16

When installing close above the base plate, cut off the lower part of the guide element.

- Cut off the guide element **(1)** below the marking ridges.

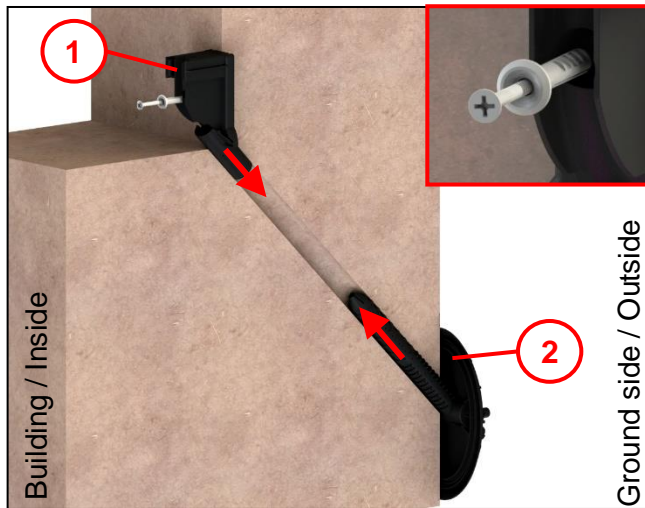


Fig. 17

- Position the shortened guide element **(1)** at the hole and drive in until the base plate is in contact with the wall.
- Drill a hole $\varnothing 6$ at least 50 mm deep.
- Drive the dowel nail 6x40 mm **(3)** into the wall and tighten.
- Place the foam pipe with outside flange **(2)** in the core hole and insert up to the beginning of the snap lug.
- Drive in the foam pipe with outside flange with a rubber mallet until the outside flange is fully in place.

Note:

Alternatively, the guide element **(1)** can also be installed after the outside flange **(2)**, but **note:** the wall duct must be completely installed before foaming!

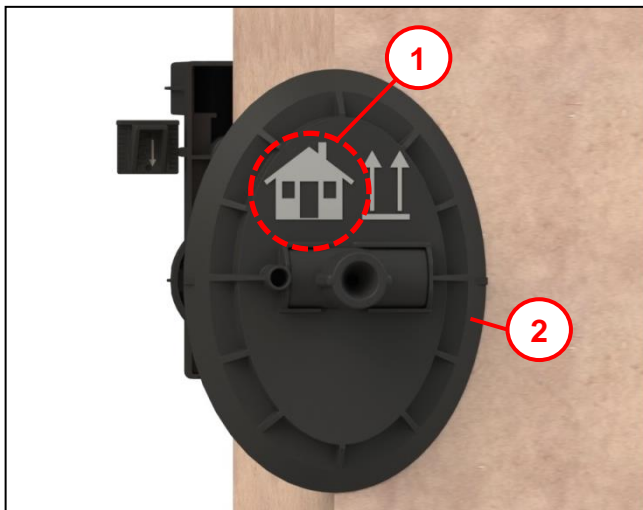


Fig. 18

Note:

When inserting the outside flange **(2)**, pay attention to the direction of installation: install with the "house pointing up" **(1)**.

6.5 Inserting the media cable

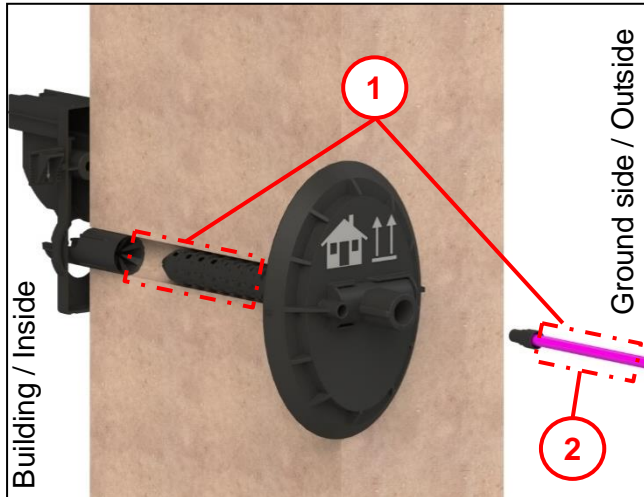


Fig. 19

Note:

Keep the media cable (2) free of grease in the foaming area (1).

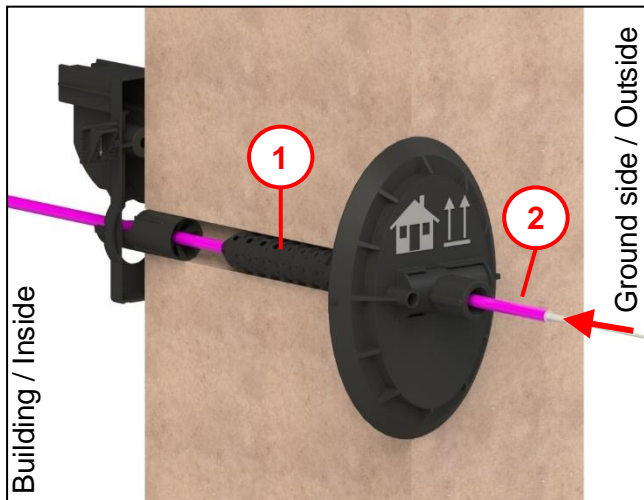


Fig. 20

- Pull the media cable (2) straight and insert it through the foam pipe (1) from the ground side.

Note:

Ensure sufficient cable length (on the basement side)! The cable can no longer be pulled further once the L100 sealing foam has been injected.

6.6 Injecting the sealing foam

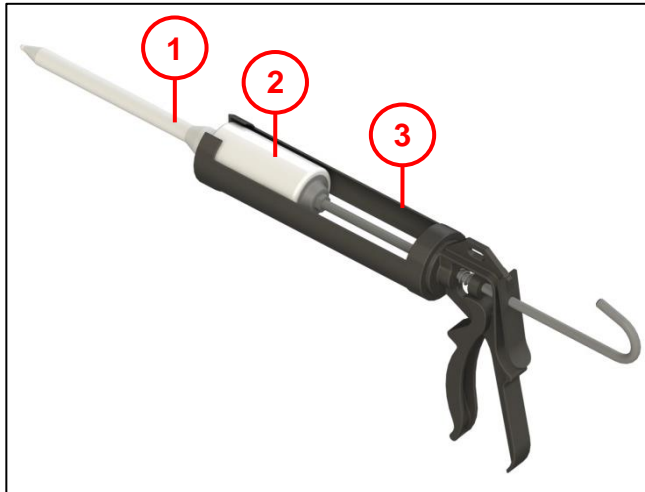


Fig. 21

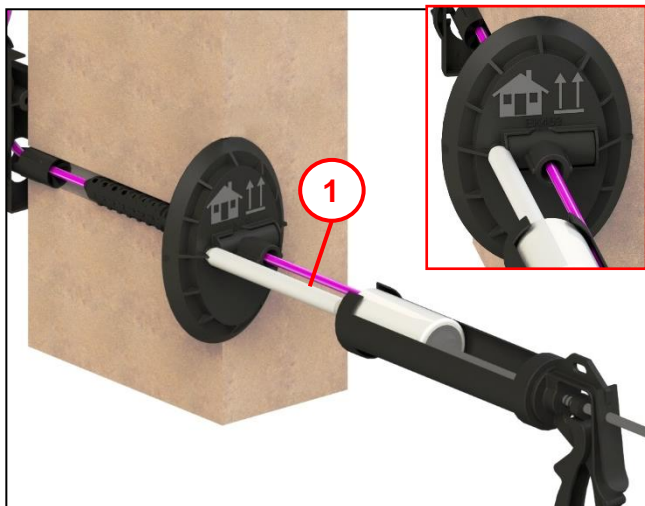


Fig. 22

Note:

- Reconfiguration is no longer possible after filling with foam!
 - Use a suitable cartridge gun or alternatively an adapter (see chapter 6.8) for the cartridge (2).
- Observe the expiry date! Refer to the cartridge label.**
- Put on work gloves.
 - Place the cartridge (2) in the cartridge gun (3).
 - Screw on the mixing nozzle (1).
 - Fill the mixing nozzle using the cartridge gun.
 - Squirt the next two strokes into the packaging bag.
 - Insert the mixing nozzle (1) into the backfill opening (2).
 - Inject the L100 sealing foam and always **empty the cartridge completely**.
 - Leave the mixing nozzle with cartridge in the backfill opening for a few minutes (for disposal, see section 11).

6.7 Continuing the media cable

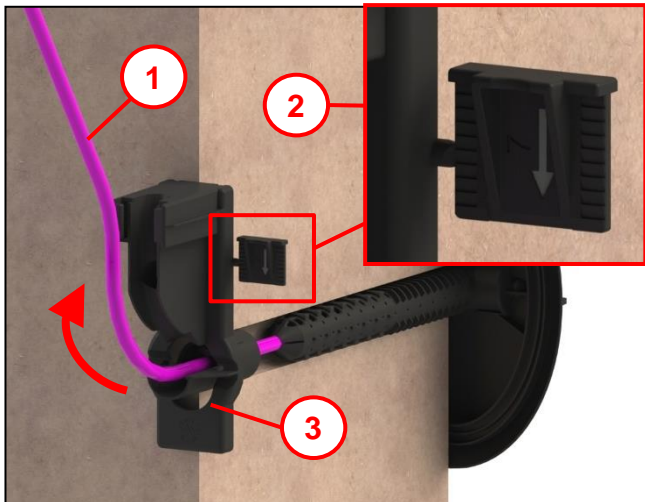


Fig. 23

Note:

- Before continuing, remove the dust protection and, if necessary, use a suitable tool to clip off the micropipe.
 - Only continue the media cable upwards **after** the fibres have been blown in!
- Guide the media cable (1) over the guide element (3) to the wall.
 - Remove the wedge (2) from the guide element.

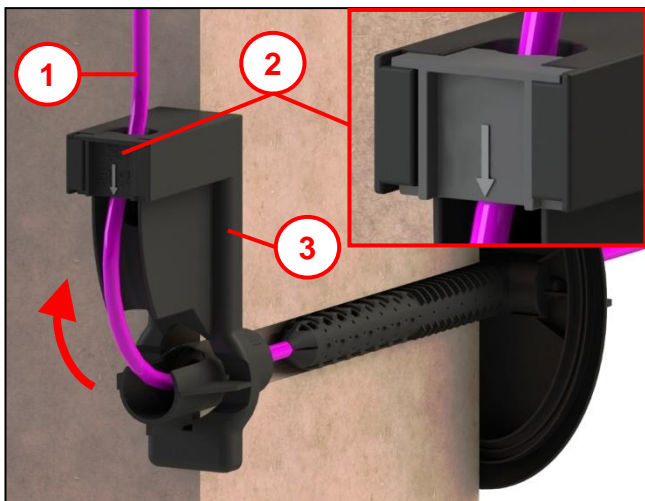


Fig. 24

- Secure the media cable (1) with the wedge (2).
 - Insert the wedge flush into the guide element (3) from above.
- Caution:**
Pay attention to the direction of installation of the wedge, see Fig. 25.

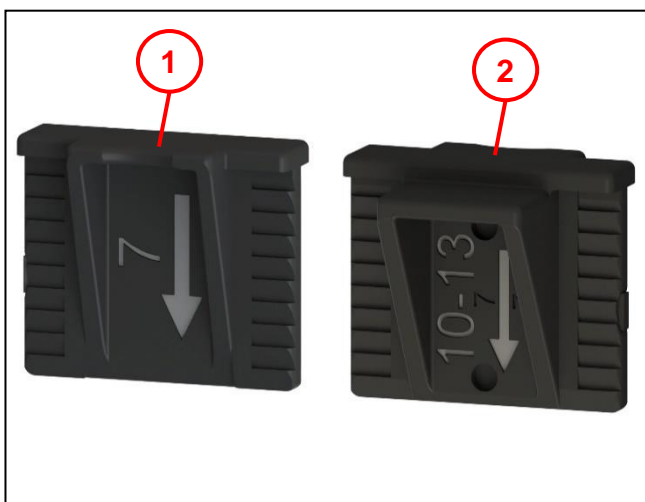
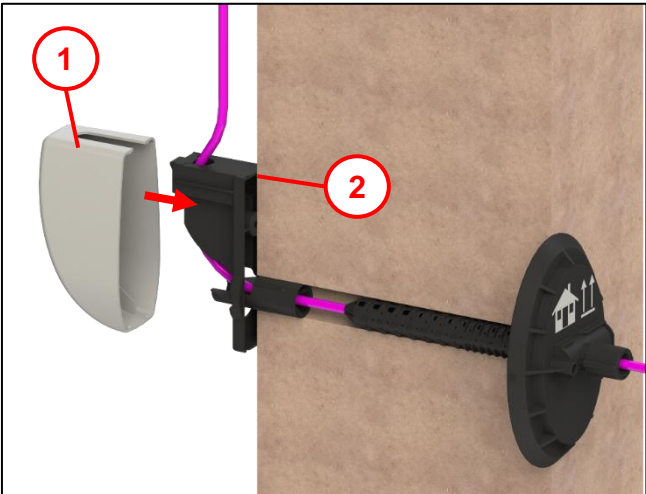


Fig. 25

Item 1 For media cable \varnothing 7 mm

Item 2 For media cable \varnothing 10-13 mm

6.8 Cover (optional)



- Place the cover **(1)** on the guide element **(2)**.

Fig. 26

7 Accessories

Article number	Designation	Figure
700732500/012	Accessories kit with adapter for cartridge gun Packaging unit: 12 pc.	
094592020/012	Cover for wall duct Packaging unit: 12 pc.	

8 Material defects

Langmatz GmbH assumes liability for material defects in the product as per Section 434 BGB (German Civil Code) for 24 months, starting from the date on the purchase receipt.

Within the scope of liability, all parts that become damaged due to manufacturing or material errors will be replaced or repaired free of charge.

The purchaser must report any deficiency complaints immediately in writing.

Claims for damages by the purchaser due to material defects or for whatever legal reason will not be accepted.

Any damage or failure caused by the following are also excluded from liability

- Incorrect use,
- Natural wear and tear
- Intervention by third parties.

We accept no liability for damage caused by force majeure or transport.

Repairs due to a deficiency complaint do not extend the warranty period for the replaced parts or the product.

This product conforms to the latest state-of-the-art technology. Nevertheless, if you experience any problems with it, please contact our hotline (see section 13 Contact).

9 Quality management

The Langmatz GmbH quality management system is certified to DIN EN ISO 9001.

10 Disclaimer/Warranty

The information in this technical document is presented appropriately and correctly in accordance with the technical regulations and to the best of our knowledge. However, this does not confer any guarantee of particular characteristics. In this context, the operator of the products supplied by Langmatz GmbH is expressly obliged to decide, based on their own judgement, whether the products are suitable and appropriate for the application or use being considered. The product liability accepted by Langmatz GmbH relates exclusively to our conditions of sale, delivery and payment. Langmatz GmbH accepts no liability due to random, indirect and resultant consequential damage, as well as any damage attributable to any use of the product other than for its intended purpose described.

11 Disposal

Dispose of the contents and containers in accordance with all local, regional, national and international laws.

12 Safety information sheet for L100 sealing foam

At www.q-wa.net/SDB/0000



13 Contact

Langmatz GmbH | Am Gschwend 10
82467 Garmisch-Partenkirchen, Germany
Our hotline: +49 88 21 920 – 137
Phone: +49 88 21 920 – 0
E-mail: info@langmatz.de | www.langmatz.de

